

# NEW MENU

# SALTED EGG RANGE

Salted Egg  
Pepper Rice  
\$24<sup>90</sup>



Salted Egg  
Cream Pasta  
\$26<sup>90</sup>



### Meat Selection

- Chicken & Prawn
- Beef
- Chicken
- Seafood (+\$3.00)

### Make it a Meal

Soft Drink + Regular Side  
(+\$8.50)

#### Regular Side



Chips



Miso Soup



Seaweed Shake Salad

#### Premium Side

(Reg Meal +\$1.00)



Onion Rings



Sweet Potato Wedges

### Add Ons



Egg \$2<sup>00</sup>



Cheese \$2<sup>00</sup>



Mushroom \$2<sup>00</sup>



Onion \$2<sup>00</sup>



Kimchi \$2<sup>30</sup>



# TRIO STEAK

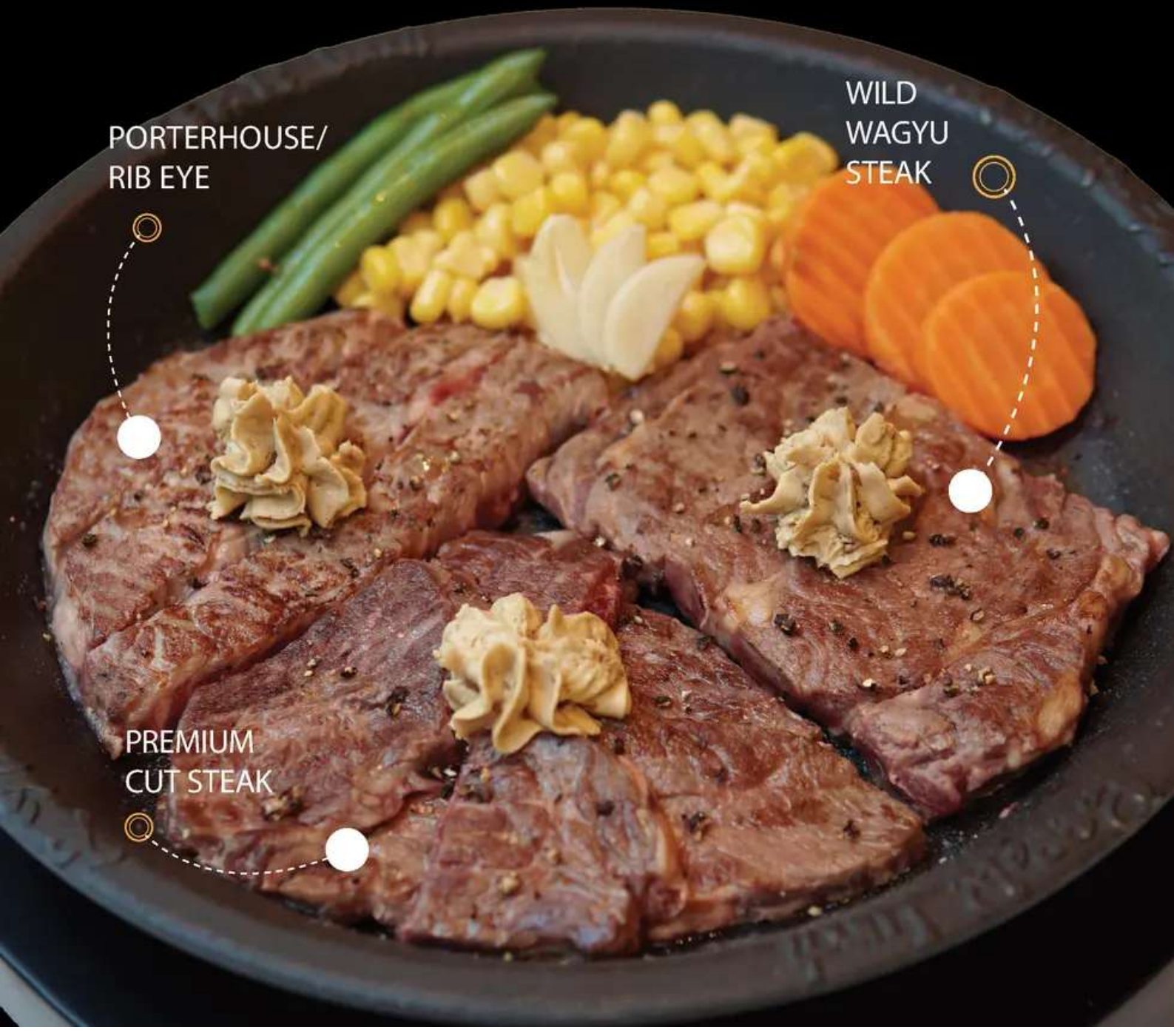
Wild Wagyu Steak,  
Porterhouse / Rib Eye Steak,  
Premium Cut Steak

No Rice \$30<sup>.90</sup>  
With Rice \$31<sup>.90</sup>

PORTERHOUSE/  
RIB EYE

WILD  
WAGYU  
STEAK

PREMIUM  
CUT STEAK





01

Jumbo Classic Beef  
Pepper Rice

\$24<sup>90</sup>

02

Kimchi Beef With  
Cheese Pepper Rice

\$19<sup>90</sup>



02

01

**Make  
it a  
Meal**

Soft Drink  
+ Regular  
Side  
(+\$8.50)

**Regular  
Side**



Chips



Miso Soup



Seaweed  
Shake Salad

**Premium  
Side**

(Reg Meal +\$1.00)



Onion  
Rings



Sweet  
Potato  
Wedges

**Add Ons**



Egg \$2<sup>00</sup>



Cheese \$2<sup>00</sup>



Mushroom \$2<sup>00</sup>



Onion \$2<sup>00</sup>



Kimchi \$2<sup>30</sup>



# SIGNATURE PEPPER RICE

03



03. Kimchi Chicken  
Pepper Rice

\$18<sup>.50</sup>

04. Classic Beef / Chicken  
Pepper Rice

\$16<sup>.50</sup>

05. Curry Beef / Chicken  
Pepper Rice

\$17<sup>.50</sup>

04



05



Change to Pasta \$1<sup>.00</sup>

Large Rice \$1<sup>.90</sup>

Upsize Meat\* \$5<sup>.50</sup>

Double Meat\* \$8<sup>.90</sup>

\*Exclude Jumbo Pepper Rice





06

Wagyu Pepper Rice

\$21<sup>90</sup>

**Make it a Meal**

Soft Drink + Regular Side (+\$8.50)

**Regular Side**



Chips



Miso Soup



Seaweed Shake Salad

**Premium Side**

(Reg Meal +\$1.00)



Onion Rings



Sweet Potato Wedges

**Add Ons**



Egg \$2<sup>00</sup>



Cheese \$2<sup>00</sup>



Mushroom \$2<sup>00</sup>



Onion \$2<sup>00</sup>



Kimchi \$2<sup>30</sup>



# SEAFOOD PEPPER RICE

Change to Pasta \$1.<sup>00</sup>

Large Rice \$1.<sup>90</sup>

Upsize Meat\* \$5.<sup>50</sup>

Double Meat\* \$8.<sup>90</sup>

\*Exclude Jumbo Pepper Rice



07. Eel Pepper Rice  
\$21.<sup>90</sup>



08. Seafood Pepper Rice  
\$20.<sup>90</sup>



09. Salmon Pepper Rice  
\$19.<sup>90</sup>





10

Prawn Pepper Rice

\$21.<sup>90</sup>

<b>Make it a Meal</b> Soft Drink + Regular Side (+\$8.50)	<b>Regular Side</b>  Chips  Miso Soup  Seaweed Shake Salad	<b>Add Ons</b>  Egg \$2. <sup>00</sup>  Cheese \$2. <sup>00</sup>	 Mushroom \$2. <sup>00</sup>  Onion \$2. <sup>00</sup>  Kimchi \$2. <sup>30</sup>
	<b>Premium Side</b> (Reg Meal +\$1.00)  Onion Rings  Sweet Potato Wedges	 Mushroom \$2. <sup>00</sup>  Onion \$2. <sup>00</sup>  Kimchi \$2. <sup>30</sup>	



# VEGGIE PEPPER RICE



11. Tofu & Veggie Kimchi  
Pepper Rice  
\$16<sup>50</sup>



12. Tofu & Veggie  
Pepper Rice  
\$14<sup>90</sup>

Change to Pasta \$1<sup>00</sup>  
Large Rice \$1<sup>90</sup>



# VEGGIE SIZZLING CURRY



<b>Make it a Meal</b> Soft Drink + Regular Side (+\$8.50)	<b>Regular Side</b>  Chips  Miso Soup  Seaweed Shake Salad	<b>Add Ons</b>  Egg \$2 <sup>00</sup>  Cheese \$2 <sup>00</sup>	 Mushroom \$2 <sup>00</sup>  Onion \$2 <sup>00</sup>  Kimchi \$2 <sup>30</sup>
	<b>Premium Side</b> (Reg Meal +\$1.00)  Onion Rings  Sweet Potato Wedges	 Mushroom \$2 <sup>00</sup>  Onion \$2 <sup>00</sup>  Kimchi \$2 <sup>30</sup>	



# SIZZLING CURRY

14  
Single Meat  
Sizzling Curry

\$16<sup>50</sup>

15  
Two Meat  
Sizzling Curry

\$19<sup>50</sup>

Choose any  
1 or 2 Meats

Beef  
Chicken  
Hamburg  
Seafood (+\$3.00)

15

## Curry Spiciness

Mild  
Hot  
Devil Hot

Additional Curry Sauce (\$2.50)

Large Rice (\$1.90)





# SIZZLING KATSU CURRY



16. Chicken Katsu  
Sizzling Curry  
\$24<sup>.50</sup>



17. Ebi Katsu  
Sizzling Curry  
\$21<sup>.50</sup>



18. Chicken Karaage  
Sizzling Curry  
\$20<sup>.50</sup>



19. Scallop Katsu  
Sizzling Curry  
\$21<sup>.50</sup>

## Make it a Meal

Soft Drink  
+ Regular  
Side  
(+\$8.50)

### Regular Side



Chips



Miso Soup



Seaweed  
Shake Salad

### Premium Side

(Reg Meal +\$1.00)



Onion  
Rings



Sweet  
Potato  
Wedges

## Add Ons



Egg \$2<sup>.00</sup>



Cheese \$2<sup>.00</sup>



Mushroom \$2<sup>.00</sup>



Onion \$2<sup>.00</sup>



Kimchi \$2<sup>.30</sup>



# PREMIUM STEAK

20

Tokusen  
Rib Eye Steak

No Rice \$27<sup>90</sup>

With Rice \$28<sup>90</sup>





21

### Shimofuri Porterhouse Pepper Steak

No Rice \$23<sup>90</sup>  
With Rice \$24<sup>90</sup>



#### Make it a Meal

Soft Drink  
+ Regular  
Side  
(+\$8.50)

#### Regular Side



Chips



Miso Soup



Seaweed  
Shake Salad

#### Premium Side

(Reg Meal +\$1.00)



Onion  
Rings



Sweet  
Potato  
Wedges

#### Add Ons



Egg \$2<sup>00</sup>



Cheese \$2<sup>00</sup>



Mushroom \$2<sup>00</sup>



Onion \$2<sup>00</sup>



Kimchi \$2<sup>30</sup>



# PREMIUM STEAK

22

Hamburg  
Steak

No Rice \$24<sup>90</sup>

With Rice \$25<sup>90</sup>





23

## Wild Wagyu Steak

No Rice \$32.<sup>90</sup>

With Rice \$33.<sup>90</sup>



### Make it a Meal

Soft Drink  
+ Regular  
Side  
(+\$8.50)

#### Regular Side



Chips



Miso Soup



Seaweed  
Salad

#### Premium Side

(Reg Meal +\$1.00)



Onion  
Rings



Sweet  
Potato  
Wedges

### Add Ons



Egg \$2.<sup>00</sup>



Cheese \$2.<sup>00</sup>



Mushroom \$2.<sup>00</sup>



Onion \$2.<sup>00</sup>



Kimchi \$2.<sup>30</sup>



# COMBO DELUXE



24. **Hamburg &  
Premium Cut Steak  
Combo Deluxe**

No Rice \$22.<sup>90</sup>  
With Rice \$23.<sup>90</sup>

### Combo Deluxe

No Rice \$18.<sup>90</sup>  
With Rice \$19.<sup>90</sup>

### Choose any 2 Meats

Chicken  
Hamburg  
Premium Cut Steak (+\$4.00)  
Salmon (+\$4.00)



25

## Combo Deluxe Hamburg & Salmon

No Rice \$22<sup>90</sup>  
With Rice \$23<sup>90</sup>



### Make it a Meal

Soft Drink  
+ Regular  
Side  
(+\$8.50)

#### Regular Side



Chips



Miso Soup



Seaweed  
Shake Salad

#### Premium Side

(Reg Meal +\$1.00)



Onion  
Rings



Sweet  
Potato  
Wedges

### Add Ons



Egg \$2<sup>00</sup>



Cheese \$2<sup>00</sup>



Mushroom \$2<sup>00</sup>



Onion \$2<sup>00</sup>



Kimchi \$2<sup>30</sup>



# PEPPER SALAD



26. Pepper Salad  
\$12.<sup>50</sup>

Pepper Salad with Chicken /  
Hamburg  
\$19.<sup>50</sup>



27. Pepper Salad with  
Premium Cut Steak  
\$23.<sup>50</sup>



28. Pepper Salad with Salmon  
\$23.<sup>50</sup>





29. Pepper Salad with Scallop Katsu  
\$21.<sup>50</sup>

30. Pepper Salad with Chicken Katsu  
\$24.<sup>50</sup>

31. Pepper Salad with Ebi Katsu  
\$21.<sup>50</sup>

32. Pepper Salad with Chicken Karaage  
\$22.<sup>50</sup>

**Make it a Meal**

Soft Drink + Regular Side (+\$8.50)

**Regular Side**



Chips



Miso Soup



Seaweed Shake Salad

**Premium Side**  
(Reg Meal +\$1.00)



Onion Rings



Sweet Potato Wedges

**Add Ons**



Egg \$2.<sup>00</sup>



Cheese \$2.<sup>00</sup>



Mushroom \$2.<sup>00</sup>



Onion \$2.<sup>00</sup>



Kimchi \$2.<sup>30</sup>



33

Kale & Spinach

\$16<sup>40</sup>





# TEPPAN PASTA

34



35



36



### Meat Selection\*

- Beef
  - Chicken
  - Seafood (+\$3.00)
- \* Exclude Kale & Spinach

34. Classic Tomato with Chicken

35. Cream Pasta with Chicken

36. Aglio Olio with Seafood

Classic Tomato  
Teppan Pasta  
\$16<sup>.40</sup>

Cream  
Teppan Pasta  
\$16<sup>.40</sup>

Aglio Olio  
Teppan Pasta  
\$15<sup>.90</sup>

### Make it a Meal

Soft Drink + Regular Side (+\$8.50)

#### Regular Side



Chips



Miso Soup



Seaweed Shake Salad

#### Premium Side (Reg Meal +\$1.00)



Onion Rings



Sweet Potato Wedges

### Add Ons



Egg \$2<sup>.00</sup>



Cheese \$2<sup>.00</sup>



Mushroom \$2<sup>.00</sup>



Onion \$2<sup>.00</sup>



Kimchi \$2<sup>.30</sup>



# SIZZLING TERIYAKI



37. Teriyaki Salmon  
With Rice \$18<sup>90</sup>

38. Teriyaki Beef  
With Rice \$15<sup>90</sup>

39. Teriyaki Hamburg  
With Rice \$15<sup>90</sup>

40. Teriyaki Chicken  
With Rice \$16<sup>90</sup>

## Make it a Meal

Soft Drink + Regular Side (+\$8.50)

### Regular Side



Chips



Miso Soup



Seaweed Shake Salad

### Premium Side

(Reg Meal +\$1.00)



Onion Rings



Sweet Potato Wedges

## Add Ons



Egg \$2<sup>00</sup>



Cheese \$2<sup>00</sup>



Mushroom \$2<sup>00</sup>



Onion \$2<sup>00</sup>



Kimchi \$2<sup>30</sup>



# SIDES

- |    |                     |                    |
|----|---------------------|--------------------|
| 01 | Seaweed Shake Salad | \$4. <sup>90</sup> |
| 02 | Chips               | \$4. <sup>90</sup> |
| 03 | Onion Rings         | \$5. <sup>90</sup> |
| 04 | Miso Soup           | \$3. <sup>95</sup> |
| 05 | Rice                | \$3. <sup>00</sup> |
| 06 | Sweet Potato Wedges | \$5. <sup>90</sup> |







# VOLCANO WAFFLE

\$14.90







# MINI VOLCANO



\$7.50

Choco Nut  
Waffle

Oreo  
Waffle







# MATCHA ICE CREAM

\$5.50

**Matcha  
Parfait**

**Matcha  
Red Bean**





# PREMIUM ICE CREAM

Green Tea  
& Red Bean  
\$5.50



Magic  
Choco Nut  
\$5.50



Honey  
Crunch  
\$5.50







Black Sesame

\$4.50



Choco Nut

\$4.50



Salted Caramel

\$4.50



Green Tea

\$4.50



# DRINKS



Cool Ridge Water	\$3.50	Pokka Tea	\$4.95
Juice	\$5.95	Peach Tea, Lemon Tea, Lychee Tea, Jasmine Green Tea	
Apple Juice, Orange Juice		Itoen Oi-Ocha	\$5.50
Soft Drink	\$3.95	Schweppes Ginger Beer	\$5.95
Pepsi, Pepsi Max, Lemonade, Solo			
Schweppes Mixers	\$5.95		
Lemon Lime Bitters, Blood Orange, Citrus Blend			



18+

FOR PEOPLE  
OVER THE AGE  
OF 18 ONLY

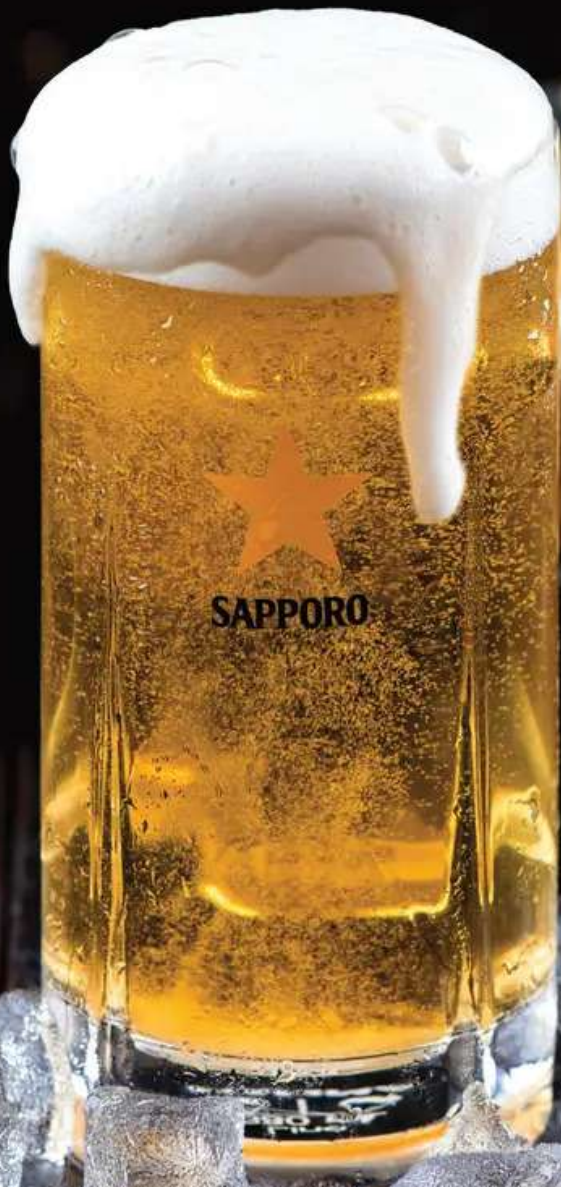


## Sapporo

Taste the Original Japanese Beer

Pot  
\$8<sup>90</sup>

Schooner  
\$10<sup>90</sup>



Licensed store only  
Pepper Lunch supports the responsible service of alcohol and encourages consumers to enjoy alcohol responsibly



# DRINKS



01. Yuzu Lemonade Fizz	\$5.95	04. Apple Mint	\$5.95
02. Raspberry Lemonade Fizz	\$5.95	05. Hokkaido Sunset	\$5.95
03. Summer Fizz	\$5.95		





# HOW TO SIZZLE LIKE A PRO



## PEPPER RICE

Press the rice in the middle.  
Sizzle everything well until meat is cooked to your liking.



## SIZZLING CURRY

Sizzle the meat to your liking.  
Pour in the curry sauce.  
Allow the curry sauce to sizzle for 30 secs to 1 min.



## PEPPER STEAK

Spread pepper paste evenly on top of the steak.  
Separate the steak into pre-cut pieces.  
Sizzle the meat to your liking.



## TEPPAN PASTA

Sizzle the pasta to your liking.  
Pour in the pasta sauce.  
Allow the sauce to sizzle for 30 secs.



## SECRET SAUCE

For a different twist, experiment with our exquisitely crafted sauces to create a taste of your own.

\*PLEASE TASTE BEFORE ADDING SAUCE.